

LED light beam 7

Spotlighting objekts and facades

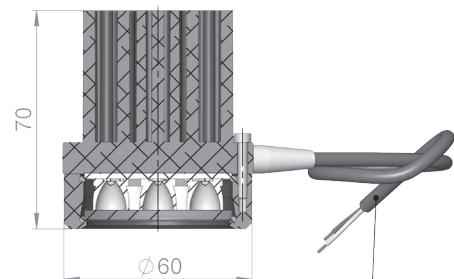
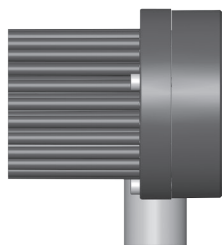
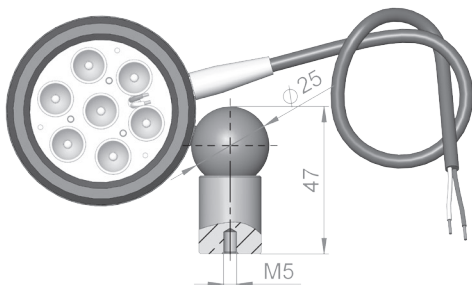
Technical Description

- 7 watts LED light beam
- High light output
- Various optics on request
- Different color temperatures on request
- UV-resistant high-performance lenses made of PMMA
- The LED module is fixed to a magnetic ball joint with stainless steel holder and without tools 360 degrees and 180 degrees swivel.
- Complete and easy to install
- Highest efficiency of all system components



Technical Datas

| | |
|-------------------------------|-----------------------------------|
| Module power | 7 watts |
| Voltage output | ~ 21 V |
| Expected life | 60.000 hrs. |
| LED color temperatures | 2700K, 3000K, 3500K, 4000K, 5700K |
| CRI | 65, 70, 85 |
| Optics (full angle) | 30°, 40°, 60° |
| IP degree of protection | IP 65 |
| Operating range | -50°C +50°C |
| Connection cable | 300 mm |
| Weight about | ~ 340 g |



Standardkabellänge L=300 mm

Braun Lighting Solutions e. K. is a participant in the export initiative "Energie Effizienz – made in Germany", initiated by the Federal Ministry for the Economy and Technology. Due to the complexity of the many possible combinations of drivers and LED modules, the values shown for technical LED parameters, including performance parameters, are typical. Actual values of specific products in specific configurations may vary from these typical values. The information and diagrams contained in this document do not constitute an offer or contractual obligation. Product parameters may change as a result of technical innovation and will be undertaken without prior notice. Our manufacturing conforms to DIN EN and VDE regulations; the product conforms to European EMC regulations.