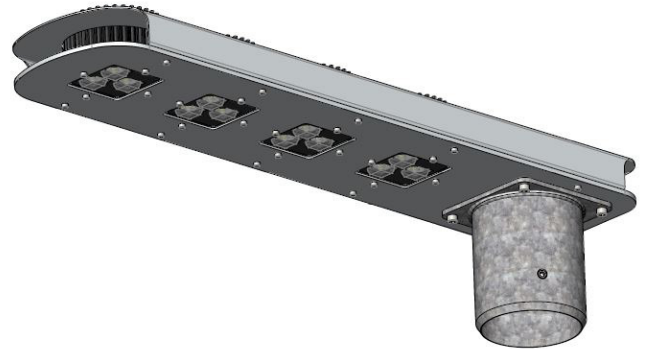


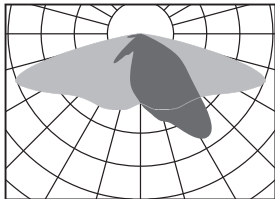
# NewNight® PIN-BOARD 4S

Street-, Park-, Residential- and District Lighting

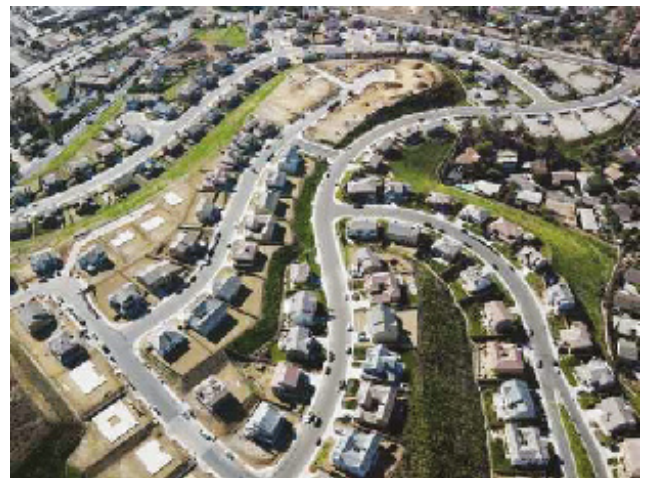
- Pole top luminaire of the newest generation
- FuturePROOF > all components independently changeable
- Ready for connection and easy to install and maintain
- Easy integration into existing lighting towers
- Low weight and low wind load
- Highest efficiency of all system components - LongLIFE
- BRAUN® 3LENS PIN-Modul LS12
- Different light distributions possible
- Changeable LED-Module with FlexPIN Technology
- High-performance lens system made of PMMA (UV-resistant)
- ThermoProtect System against overtemperature of the LED
- Vibration-resistant
- Lifetime L80: 60.000 - 100.000 h



LS12 ME600  
Lighting for one or two-sided  
arrangement of poles, also  
with lower mounting heights  
and larger distances



LS12 ME612  
Lighting for pedestrian and  
bicycle paths with one sided  
arrangement of poles, also  
with lower mounting heights  
and larger distances



NewNight® Pole top luminaire PIN-BOARD 4S	Eco	Basic E1	Light E2	DALI
Power consumption	120W	20-120W	20-120W	1-120W
Luminous flux on 4000K	10152lm	10152lm	10152lm	10152lm
Recommended mounting height	5...10m	5...10m	5...10m	5...10m
Power control options   Dimming				
manually via 10-step coding switch		•	•	
Phase controlled night-time light reducing (half-night switch, 230VAC)			•	
Dimming manually via 10-step coding switch			•	
AstroDimm - programmable dimming levels	•	•	•	•
0-10V   1-10V Interface	•			
DALI interface				•
Light color				
2700K, 3000K, 3500K, 4000K, 5000K, 5700K	•	•	•	•
Applications - Light distributions - symmetrical und asymmetrical				
For residential and residential streets as well as district lighting	•	•	•	•
For pedestrian and bicycle paths as well as for parks and green areas	•	•	•	•

Due to the complexity of the many possible combinations of drivers and LED modules, the values shown for technical LED parameters, including performance parameters, are typical. Actual values of specific products in specific configurations may vary from these typical values. The information and diagrams contained in this document do not constitute an offer or contractual obligation. Product parameters may change as a result of technical innovation and will be undertaken without prior notice. Our manufacturing conforms to DIN-, EN-, and VDE-, CE regulations.