

Old-Leipzig

LED pole-top luminaire

The Old-Leipzig is a replication lantern that is true to the original in every technical and aesthetic detail. The lantern is equipped with innovative, energy-efficient LED technology from leading manufacturers. The lamp Alt-Leipzig is strut-free and therefore glazed all around. The Old-Berlin lantern achieves a magnificent lighting effect, with a brilliant and natural color rendering that perfectly replicates the light from a historic gaslamp. The use of premium materials guarantees a long service-life. The LED skylight is to be emphasized. It serves for homogeneous illumination/ lighting of the interior roof area. The light is very easy to maintain due to a hinged roof. Due to its rotationally symmetrical light distribution, this luminaire is ideally suited for the illumination of squares, streets, residential areas, green spaces and driveways.

Lighting configurations and materials:

Lantern body and roof: Cast aluminum and aluminum

Reflector: Powder-coated white (RAL 9016)

(choose fitting type: convex or concave)

Replicate historic BAMAG BERLIN remote ignition housing with combustion pipe that serves as a central cableway (non visible cable).

Additional configurations available on request.

Glazing options:

Plastic (PC) or acrylic (PMMA)

Glass: Safety glass, float glass, mouth-blown Flatglass „restauro“

Guide frame configuration:

see versions V1, V2 a/b

Additional mounting options available on request.

Standard paint in Onyx Black (iron mica thick-layered paint)

Paint options according to RAL Color Table, as well as FerroGrip special surfacing.

Lantern-base configurations:

V1: Threaded top for mounting the lamp with the guide frame onto the masthead: Ø85mm or Ø100mm for 4x M12

V2 a: spigot Ø60mm

V2 b: spigot Ø76mm

PlugBox: on/off: Switching function on/off

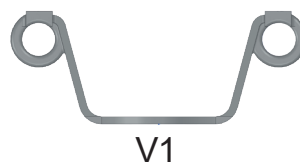
PlugBox ESS Basic: Adjustability of the basic brightness

PlugBox ESS Light: Adjustability of the basic brightness | Adjustability of the reduction brightness

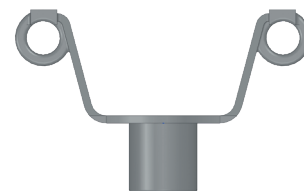
Half-night switching via control voltage 230V AC

MaxiDimm3000: For dimming and/or partial switch-off for balanced and unbalanced lighting solutions

Switching input: 230V AC | Interface: 1-10V



V1



V2 a/b

His.lux® LED-Modul Serie 333



TECHNICAL DATA

System power	6 - 36 Watt
Expected life	>60.000 Std.
Color temperature	2700K*
Luminous flux	2225 lm (36 Watt)
Color rendering	CR1 > 85
IP protection class	IP 65
Historical diffuser	PC satined
Application area	-40°C bis +55°C
Protection class	I oder II

*Color temperature freely selectable

NewNight® CONE LED-Modul



TECHNICAL DATA

System power	8 - 25 watts
Expected life	>60.000 H.
Color temperature	4100K*
Luminous flux	2620 lm
Color rendering	CR1 > 85
IP protection class	IP 65
LED cover	PC transparent or satined
Application area	-40°C bis +55°C
Protection class	I oder II

*Color temperature freely selectable

Due to the complexity of the many possible combinations of drivers and LED modules, the values shown for technical LED parameters, including performance parameters, are typical. Actual values of specific products in specific configurations may vary from these typical values. The information and diagrams contained in this document do not constitute an offer or contractual obligation. Product parameters may change as a result of technical innovation and will be undertaken without prior notice. Our manufacturing conforms to DIN-, EN-, and VDE-, CE regulations.