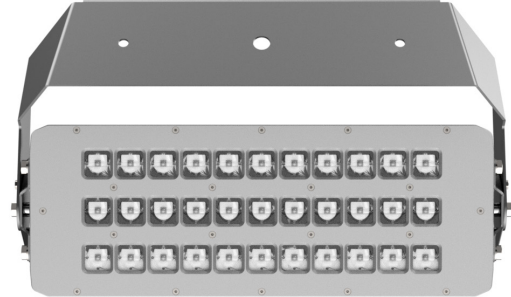


PrimeLine

Architecture & Industrial Lighting



- LED-high power spotlight
- Ready for connection and easy to install and maintain
- Easy integration into existing lighting towers
- Low weight and low wind load
- Large light emission area and extremely powerful light output
- Highest efficiency of all system components - LongLIFE
- Different light distributions possible
- Insensitive to vibration
- ThermoProtect System against overtemperature of the LED
- Lifetime L80: 60.000 - 100.000 h
- Overvoltage protection 10kA (optional 20kA)
- Main dimensions (L/B/H): 570x200x175mm (without mounting bracket)
- Weight: approx. 13kg

BRAUN® PrimeLine	ECO	Basic E1	Light E2	DALI
Power Consumption	280W	60-280W	60-280W	1-280W
Luminous Flux	27.653lm	27.653lm	27.653lm	27.653lm
System performance	101lm/W	101lm/W	101lm/W	101lm/W
Possibility/s of regulation of the performance				
Manual via 10-stage coding switch		•	•	
Half-night switching via control voltage 230VAC			•	
Dimming is done manually via 10-step coding switch			•	
AstroDimm - multiple dimming levels programmable (optional)	•	•	•	
0-10V 1-10V Interface Dim-to-Off	•			
DALI				•
Light color (Other light colors available on request)				
3000K Warm White	•	•	•	•
4000K Neutral White	•	•	•	•
5000K Daylight White	•	•	•	•
6500K Daylight White	•	•	•	•
Light distribution/s see variants*				

Due to the complexity of the many possible combinations of drivers and LED modules, the values shown for technical LED parameters, including performance parameters, are typical. Actual values of specific products in specific configurations may vary from these typical values. The information and diagrams contained in this document do not constitute an offer or contractual obligation. Product parameters may change as a result of technical innovation and will be undertaken without prior notice. Our manufacturing conforms to DIN-, EN-, and VDE-, CE regulations.

PrimeLine

Architecture & Industrial Lighting

Technical Description

Power consumption: 280 Watt

Luminous flux: 27.653lm

Color Temperature: 3000K | 4000K | 5000K | 6500K

Switching function: Eco (on/off) | Basic E1 | Light E2 | DALI

LED control gear/s: CE | ENEC | DALI | 0-10 | 1-10V (Dim-to-Off)

Permissible operating voltage: 100-240VAC, 50/60Hz

Permissible operating voltage: -40°C bis 50°C

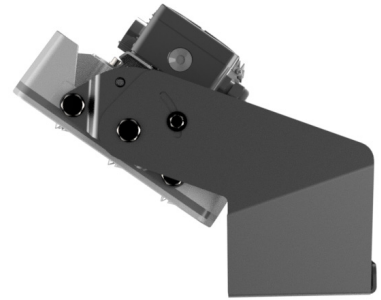
Degree of protection luminaire and LED space: IP67 | SKI

Housing: Die cast aluminum, powder coated

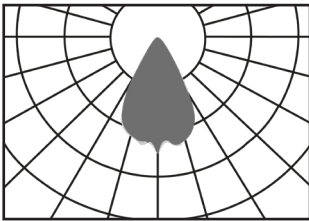
Optical Cover: technical lens system

Stainless steel mounting bracket: Adjustment range 140°

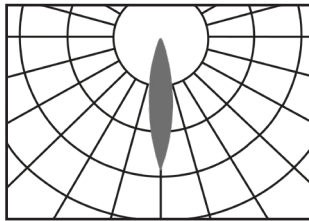
Other mounting types on request (e.g. Chain suspension)



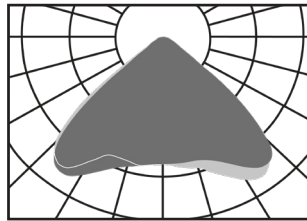
REFLECTOR SYSTEM VARIANTS*



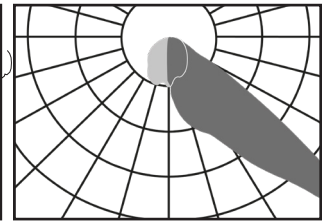
Variant 1: PrimeLine 01
Light distribution: symmetrical 65°



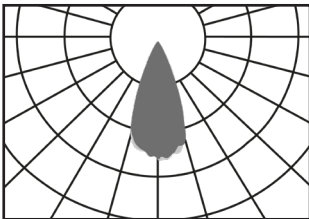
Variant 2: PrimeLine 02
Light distribution: symmetrical 20°



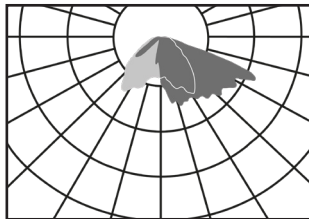
Variant 3: PrimeLine 03
Light distribution: symmetrical 105°



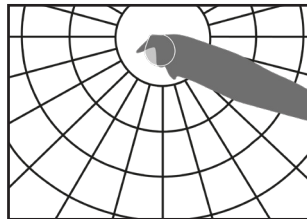
Variant 4: PrimeLine 04
Light distribution: asymmetric 45°



Variant 5: PrimeLine 05
Light distribution: symmetrical 40°



Variant 6: PrimeLine 06
Light distribution: asymmetric



Variant 7: PrimeLine 07
Light distribution: asymmetric 65°

Due to the complexity of the many possible combinations of drivers and LED modules, the values shown for technical LED parameters, including performance parameters, are typical. Actual values of specific products in specific configurations may vary from these typical values. The information and diagrams contained in this document do not constitute an offer or contractual obligation. Product parameters may change as a result of technical innovation and will be undertaken without prior notice. Our manufacturing conforms to DIN-, EN-, and VDE-, CE regulations.