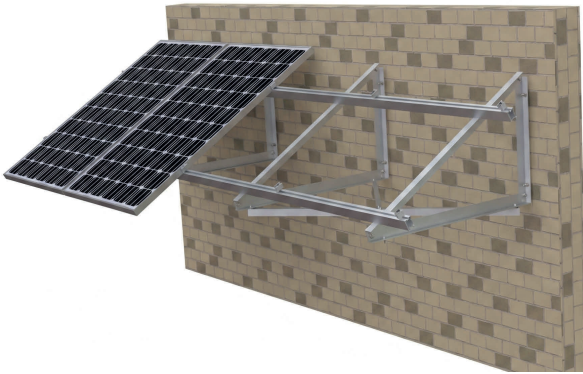


SO-WBMS/Wall Bracket

Mounting System

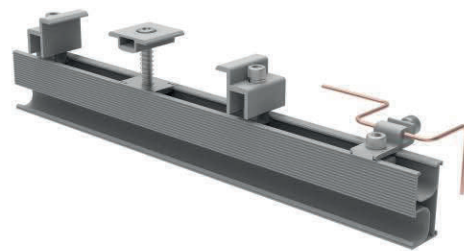
The SO-WBMS wall mounting system is suitable for many different types of walls, such as concrete, masonry, wooden walls, etc..

Thanks to its simple and quick installation, it is a popular solution for mounting solar panels on walls. The rail connection withstands high wind and snow loads. The side mounting allows for quick installation. It is a more reliable and simpler solar mounting system for photovoltaic systems.



Universal

Suitable for various types of walls.



Easy Installation

Easy to mount on the wall.

Technical Data

Product name: SO-WBMS Wall Bracket Mount. Syst.

Application: different, load-bearing wall types

Inclination: approximately 22°

Material: Aluminium 6005-T5

Color: Nature

PV module: Framed

Module size: 1762 x 1134 mm

Module direction: Portrait and Landscape

Design wind loading: Up to 50m/s

Design snow loading: Up to 1 metre

Wall height: Up to 8 metre

Design Standard: EN1991, AS1170, UL1703

The actual design and dimensions of individual products may differ from the design and dimensions shown. The information and diagrams contained in this document do not constitute an offer or a contractual obligation. Product parameters are subject to change due to technical innovations and without prior notice.