

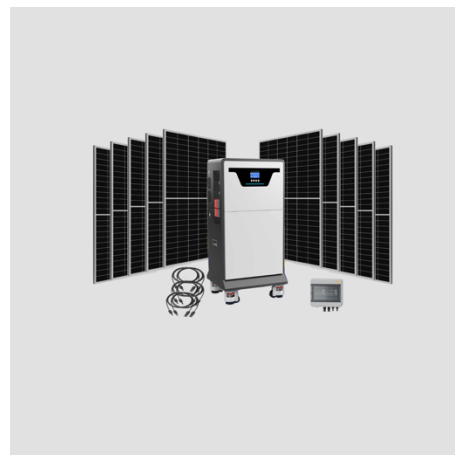
4,95 kWp Scalable Solar Bundle Grow 1.11

Smart energy one-stop solution

This off-grid solar system with 4,95 kWp and a 16 kW battery storage system is a sustainable and intelligent energy storage solution for increasing energy efficiency in your home.

By integrating advanced storage features, the system allows homeowners to optimize their energy consumption, reduce their reliance on the grid or generators, and significantly lower their energy costs.

Our complete solution includes all necessary components such as an inverter, a 16 kW battery storage system, 11 solar panels with 4,95 kWp, a junction box, grounding for the solar array, and all required solar cables. Solar systems with battery storage offer households a reliable and environmentally friendly way to manage energy, resulting in significant savings on electricity or generator fuel. This solar package is ideal if you plan to expand your system later. This solar system allows you to expand up to 11 kWp with additional solar panels.



Technical description:

Solar generator	WB-RPS 11+16	Peak efficiency (Battery mode):	>94% battery mode >99% line mode
Operating environment temperature:	0°C~40°C	Transfer time:	10ms
Storage environment temperature:	-15°C~60°C	Dual output function:	yes
Environment humidity:	20%~95%	Max. main output power:	11.0KVA/11.0KW
Noise emission:	<50db	Max. second output power:	5.5KVA/5.5KW
Cooling mode:	Active cooling	Battery	
Ingress protection:	IP 21 (Indoor use)	Battery voltage:	51,2Vdc
AC Input		Battery energy:	16,08 kWh
Rated input voltage:	208/220/230/240VAC	Cell technology:	LiFePO4 (Lithium iron phosphate)
Voltage range:	170~264VAC(for ups mode), 90~280VAC (for home appliances)	Fully charging voltage(FC):	58.4 Vdc
Frequency range:	40~70Hz (Auto sending)	Fully discharging voltage(FC):	41.6 Vdc
Charging current range (AC):	2~120A	Cycle life:	≈ 6000 Cycles @ 80%
Max. input current (AC):	50A	Product general data	
PV Input		Solar panel typ:	Monocrystalline silicon, max. 450 Wp
Solar charging type:	MPPT	Color:	Powerstation - white / Panel frame in natural aluminum
PV max. input power:	11 kWp (5,5 kWp per string)	Main dimensions powerbox:	H 550 x W 1273mm x D 361 mm
MPPT tracking voltage range:	60-500 VDC	Main dimensions solar panel:	H 1762 x W 1164 x D30 mm
Max. PV input voltage:	500 VDC	Weight powerstation:	156 kg
PV charging current range:	2~160A	Weight each solar panel:	24,6 kg/per pcs.
Max. charging current:	160A	Installation powerbox:	Floor standing
Output		Installation solar panels:	on our mounting systems
Rated output voltage:	220~240V± 5%	Mounting systems:	will be charged separately
Output frequency:	50/60Hz ± 1%,	Wiring:	all solar cables included
Peak power:	11kW	Earthing:	will be charged separately
Overload capacity (Battery mode):	5.5s@≥140% load 10.5s@100%-140% Load	Scalability:	Up to 11 kW

Due to the complexity of the numerous possible combinations of inverters, batteries, and solar panels, the specified technical parameters, including the performance parameters, are typical values. The actual values of specific products in specific configurations may differ from these typical values. The information and diagrams contained in this document do not constitute an offer or a contractual obligation. Product parameters are subject to change due to technical innovations and are subject to change without prior notice. We manufacture in accordance with DIN, EN, VDE, and CE regulations.